

AGRITURISMO CASTELLO DI MONTOZZI

Location Montozzi – Pergine Valdarno (Arezzo)



“LA CASETTA”

DETACHED HOUSE WITH SHARED SWIMMING-POOL - SLEEPS 4

"La Casetta" is a small detached farmhouse, over two floors, at the entrance of the ancient family village Castello di Montozzi, situated on the top of hill with breathtaking views over the Tuscan countryside. The house has ceilings with wooden beams, terracotta floors, a large fireplace and a typical Tuscan rustic furnishing. The private garden has tables and chairs to eat or relax in the open air. Guests can also use the shared swimming-pool, the table tennis and the playground for the children. It is the perfect place for a peaceful holiday surrounded by a natural environment with woods and fields where you can enjoy long walks or explore some of most beautiful art cities such as Arezzo, Firenze or Siena all within easy reach by car. Free Wi-Fi access at the reception. Air conditioning in the bedrooms.

SMALL DETACHED HOUSE OVER TWO FLOORS (about 80 sq. m.):

RAISED GROUND FLOOR: wide reception with dining-table and a fireplace, reception with large glass windows, kitchen/ breakfast room, 2 bedrooms (one double and one twin), 1 bathroom con tub/shower.

FIRST FLOOR: panoramic attic with a sofa.

DISTANCES FROM ART CITIES: Arezzo 25 km, Siena 35 Km, Firenze 70 Km.

INTERIOR DETAILS:

BEDS: 4

BEDROOMS: 2 (1 double and 1 twin) with air conditioning

BATHROOM: 1 with tub/shower

KITCHEN/BREAKFAST ROOM: 4 hobs, electric oven, fridge-freezer, dishwasher

RECEPTION: large room with big, panoramic glass windows

DINING-ROOM: with large fireplace

FURNISHING: Tuscan rustic style

SATELLITE TV

WASHING MACHINE

WINTER HEATING: diesel fuel

OUTDOOR AMENITIES

SHARED SWIMMING-POOL: 6m x 12m - depth: 1,2 - 2,2 m

PRIVATE GARDEN: about 120 sq. m. with tables and chairs, barbecue and panoramic views

COVERED PARKING

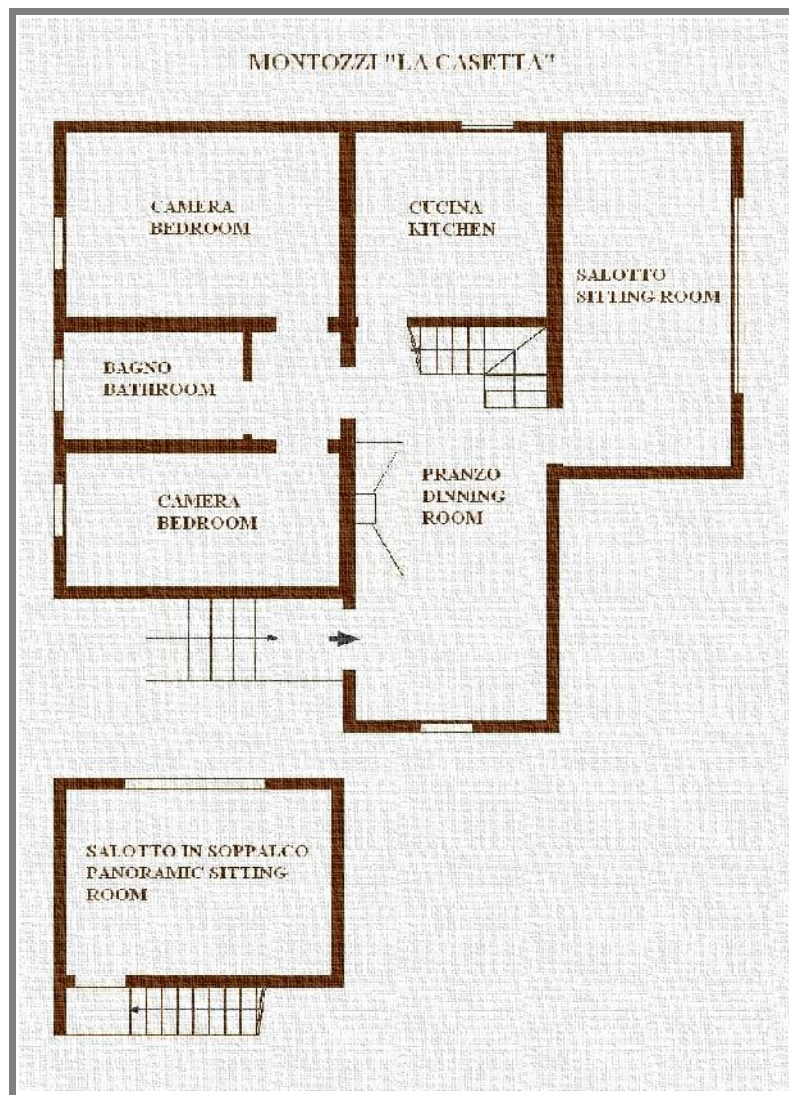
PLAYGROUND: table tennis, swing, football table, volley ball

TREKKING: ideal place for long, beautiful countryside walks among woods, olive trees and fields

WI-FI: free access point near the reception



MAP "LA CASETTA"



LOCATION



Location Montozzi - 52020 Pergine Valdarno (AREZZO)

Directions :(GPS COORDINATES: 43.477224 - 11.651791)

TAKE MOTORWAY 'A1', EXIT "VALDARNO", TURN RIGHT, AFTER THE STRAIGHT, FOLLOW THE SIGNS FOR LEVANE. IN THE CITY CENTER OF LEVANE, AT THE TRAFFIC LIGHT, TURN LEFT (DIRECTION AREZZO). CONTINUE FOR 4 KM. TAKE THE COUNTRYROAD ON YOUR RIGHT INDICATED BY THE SIGN "CASTELLO DI MONTOZZI". SINCE THERE ARE TWO COUNTRY ROADS WITH THIS SIGN, YOU ARE ADVISED TO TAKE THE SECOND ROAD (THE FIRST IS FOUND ON A STRAIGHT SOON AFTER THE TOWN OF LEVANE, THE SECOND AFTER ABOUT 3KM FROM LEVANE, ON A CURVE TO THE LEFT).